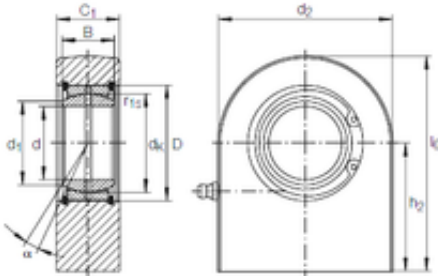




RRK rolamento CORP.

120 mm x 180 mm x 85 mm INA GF 120 DO
paliers lisses



Bearing No. GF 120 DO

| | |
|-------------------------------|---------------|
| Size | 120x180x85 mm |
| Bore Diameter | 120 mm |
| Outer Diameter | 180 mm |
| Width | 85 mm |
| d | 120 mm |
| D | 180 mm |
| B | 85 mm |
| d1 | 135,5 mm |
| d2 | 360 mm |
| dk | 160 mm |
| h2 | 210 mm |
| l6 max. | 390 mm |
| r1 min. | 1 mm |
| C1 | 90 mm |
| C1 max | 95 mm |
| Angle | 6 ° |
| Weight | 79 Kg |
| Basic dynamic load rating (C) | 950 kN |

GF 120 DO Bearing 2D drawings and 3D CAD models